

## Priorities

At Indiana University Bloomington, OVPR is committed to helping faculty develop individual research, scholarly, and creative projects as well as supporting collaborative interdisciplinary research opportunities among faculty, schools, centers, and institutes. In Fiscal Year 2011–12, OVPR will focus on the following priorities:

- **Provide proposal development support to faculty to promote greater success in garnering external funding.** OVPR will leverage personnel, resources, and facilities, including OVPR centers and institutes, in support of faculty research, scholarship, and creative activities as well as supporting successful proposal development for relevant foundations and federal agencies.
- **Establish IU Media Preservation Center.** Following an extensive Media Preservation Survey conducted on the IU Bloomington campus, the campus will create a center for the preservation of rare and unique media that will be unlike any other in the Midwest and one of few in the nation. In partnership with other units on campus, OVPR is actively supporting efforts to firmly establish this center and enable it to attend to critical archival preservation tasks.
- **Repurpose research space for the social sciences.** In partnership with other campus units, OVPR will continue to focus on developing collaborative space for social sciences research in Woodburn Hall, Eigenmann Hall, and other locations.
- **Continue to develop core science facilities for basic research in the sciences.** In partnership with the schools and the College of Arts and Sciences, OVPR will finalize a facilities database that will be used to further support and develop core science facilities to benefit faculty across IU Bloomington schools and departments.

CAMPUS  
MAIL

INDIANA UNIVERSITY  
OFFICE OF THE VICE PROVOST FOR RESEARCH  
Bloomington



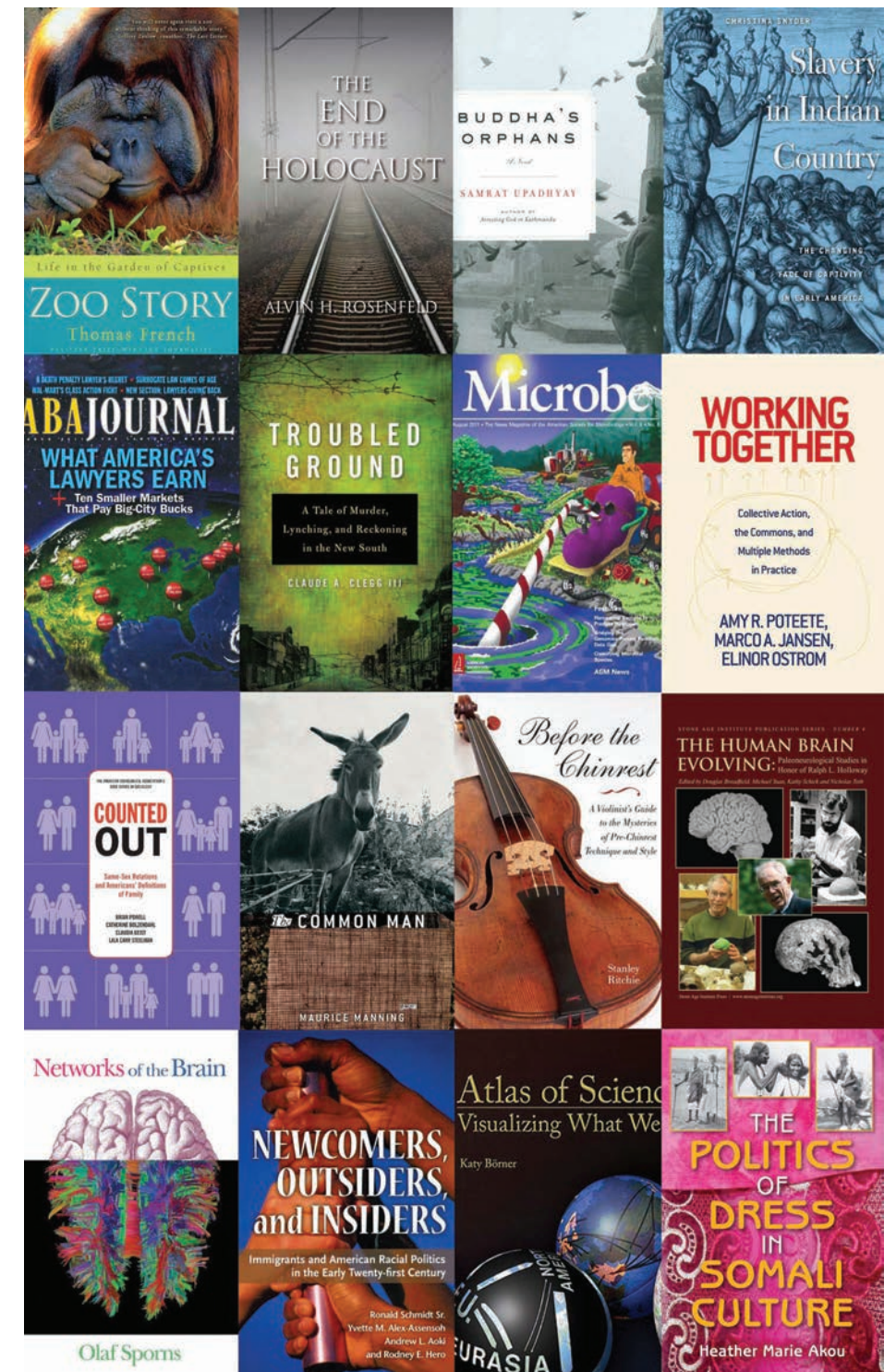
## Introducing OVPR Proposal Development Services

OVPR Proposal Development Services helps faculty in any discipline on the Bloomington campus with any and all phases of proposal development. Services provided include assistance with:

- identifying funding opportunities
- proposal narratives
- budgets
- letters of intent
- institutional requirements
- submission to IU Research Administration

CONTACT OVPR TODAY

ovprhelp@indiana.edu  
(812) 855-7989



Office of the Vice Provost for Research

## Year-end Report

IU Bloomington | 2010–11

The Office of the Vice Provost for Research at Indiana University Bloomington works closely with the university-wide Office of the Vice President for Research to ensure that the IU Bloomington faculty are positioned competitively in all aspects of creative activity and research, especially large-scale multidisciplinary research funded by federal agencies.

## Faces of Research at IU Bloomington

In Fiscal Year 2010–11, the faculty at IU Bloomington were supported through various OVPR programs and awarded more than \$132.6 million from a wide range of funding agencies such as the National Institutes of Health, the National Science Foundation, NASA, the National Endowment for the Humanities, the U.S. Department of Education, the U.S. Department of Energy, and the U.S. Department of State. Some of the faces of IU Bloomington research, identified by name and home department, program, or school, appear below.



**Lisa Gershkoff-Stowe**  
Speech & Hearing Sciences



**Claude Clegg**  
History



**Terry Mason**  
Education



**Erin Carlson**  
Chemistry



**Youngjoo Cha**  
Sociology



**Brian D'Onofrio**  
Psych. and Brain Sciences



**Judy Qiu**  
Computer Science



**Idalene Kesner**  
Business



**James Glazier**  
Physics



**Claire Walczak**  
Medical Sciences



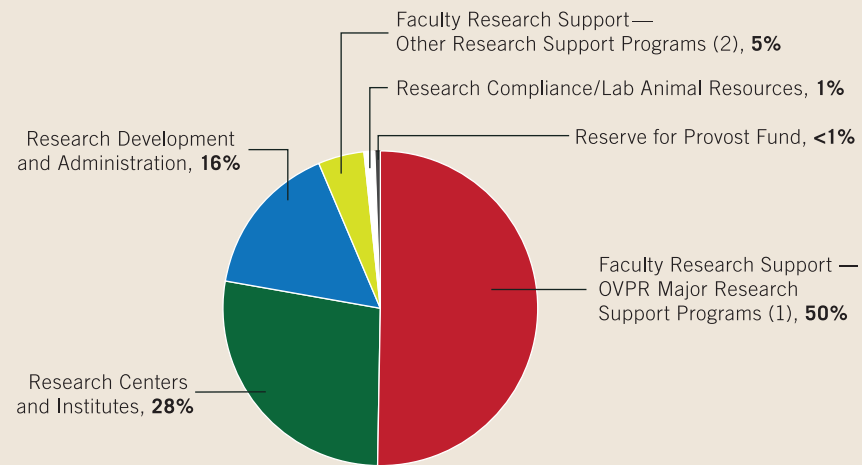
**Sylvester Johnson**  
Religious Studies



**Laura Wasylenki**  
Geological Sciences

## Internal funding

### 2011 Budget, Office of the Vice Provost for Research

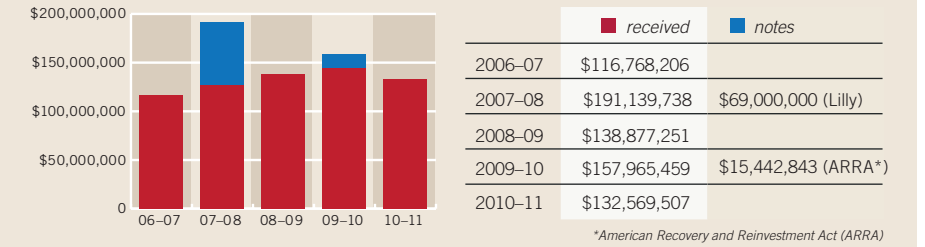


Category	Amount	Percentage
Faculty Research Support, OVPR Major Research Support Programs (1)	\$6,804,919	50%
Research Centers and Institutes	\$3,745,051	28%
Research Development and Administration	\$2,135,984	16%
Faculty Research Support, Other Research Support Programs (2)	\$625,441	5%
Research Compliance/Lab Animal Resources	\$147,008	1%
Reserve for Provost Fund	\$70,619	<1%
<b>TOTAL 2010–11 BUDGET</b>	<b>\$13,529,022</b>	<b>100%</b>

(1) Major Programs include Faculty Startup, Faculty Research Support Program (FRSP), Grant Matches, Bridge Funding, and additional support for initiatives in OVPR centers and institutes.  
 (2) Other Research Support Programs include Research Leave Supplements, Collaborative Research & Creative Activity Funding, Faculty Grant-in-Aid for Research, and Intercampus Research Fund.

## External funding

### Awards received by IU Bloomington, 2006–11



### External awards and expenditures by unit, 2010–11

Research expenditures refers to total spending on projects funded by external grants and contracts during the fiscal year.

Unit	Awards	Expenditures
Arts & Sciences (The College)	443	\$62,471,746
Budget & Fiscal Affairs	5	\$825,958
Division of Student Affairs	1	\$36,000
Education	114	\$19,428,581
Executive Management/Academic Support	25	\$3,566,015
Health, Physical Education, and Recreation (HPER)	50	\$5,507,484
Informatics and Computing (SOIC)	42	\$5,978,749
Jacobs School of Music		\$11,828
Journalism		\$25,705
Kelley School of Business	14	\$3,012,779
Libraries	6	\$173,088
Library and Information Science (SLIS)	8	\$1,072,242
Maurer School of Law	1	\$9,500
Optometry	30	\$6,472,715
Public and Environmental Affairs (SPEA)	42	\$7,844,087
Undergraduate Education	1	\$50,000
Vice President for Diversity, Equity, and Multicultural Affairs	11	\$431,858
Vice President for Information Technology	1	\$192,573
Vice Provost for Research	94	\$15,946,132
<b>TOTAL</b>	<b>889</b>	<b>\$133,587,401</b>

## Centers and Institutes

### Center and Institute external awards and expenditures 2010–11

Center/Institute	Awards	Expenditures
American Indian Studies Research Institute	2	\$406,663
Anthropological Center for Training and Research on Global Environmental Change	2	\$545,279
Center on Congress	3	\$967,586
Center for Exploration of Energy and Matter*	18	\$4,695,301
Center for Genomics and Bioinformatics	7	\$2,526,774
Center for the Study of Institutions, Population, and Environmental Change	2	\$312,220
Center for the Study of History and Memory		\$164,794
Center for Survey Research	2	\$86,815
Consortium for Education and Social Science Research		\$867,892

Center/Institute	Awards	Expenditures
Glenn A. Black Lab of Archaeology	6	\$187,571
Indiana Geological Survey**	20	\$1,829,345
Indiana Institute on Disability and Community	19	\$2,875,646
Indiana Molecular Biology Institute		\$69,037
Institute for Advanced Study	2	\$198,880
Kinsey Institute for Research in Sex, Gender, and Reproduction	5	\$578,171
Mathers Museum of World Cultures	1	\$19,878
Poynter Center for the Study of Ethics and American Institutions		\$144,773
Workshop in Political Theory and Policy Analysis	4	\$682,223
Other OVPR centers & institutes***	1	\$33,780
<b>TOTAL</b>	<b>94</b>	<b>\$17,195,978</b>

\* Includes IU Cyclotron Facility and the Nuclear Theory Center  
 \*\* Includes the Center for Geospatial Data Analysis  
 \*\*\* Includes Center for Research in Environmental Science, Center for the Integrative Study of Animal Behavior, Industrial Research Liaison Program, IU Research Park, Laboratory Animal Resources, Radiation Safety, Research Administration, and Bloomington-Clinical Translational Sciences Institute